

# 陶联社树脂板系列

## Resin decorative board

树脂装饰板采用韩国LG高分子树脂，柔韧性强，抗老化性能高，  
无异味无残留，属于环保材料。  
与竹编、和纸、植物中草药复合成为各种装饰材料和艺术收藏品。  
可做屏风隔断、门窗和室内装置等。

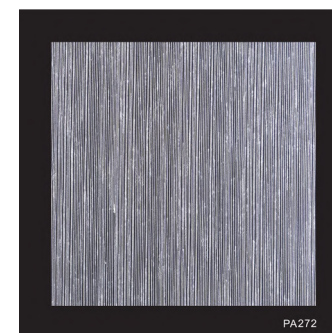
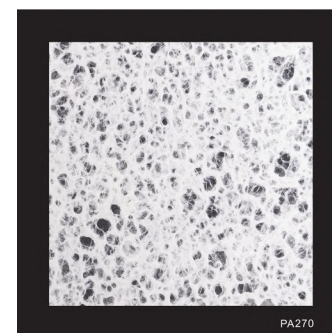
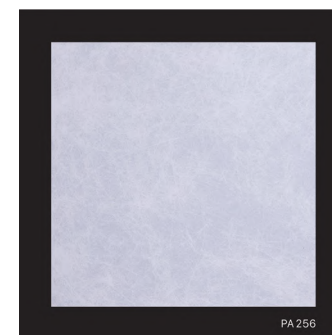
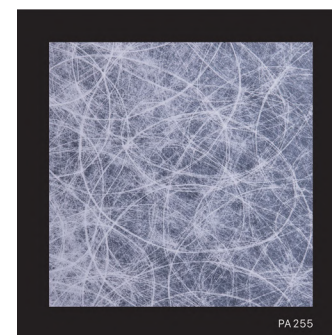
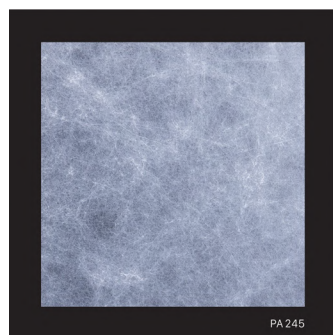
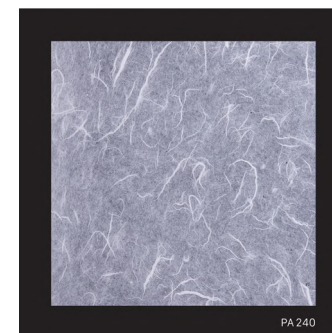
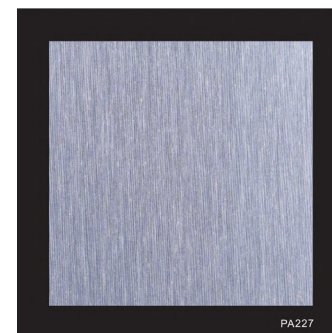
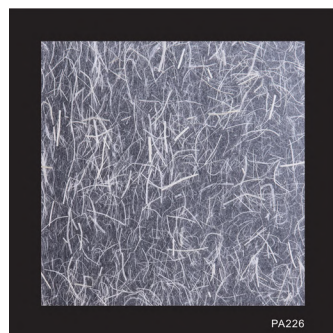
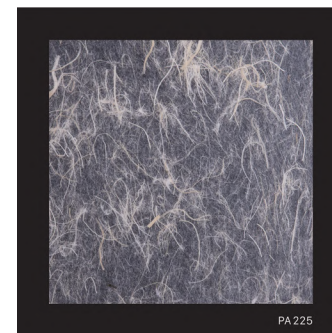
Resin decorative board

Using Korean LG polymer resin, it has strong flexibility,  
high anti-aging performance, no odor and no residue,  
is an environmentally friendly material.

Combined with bamboo weaving, Japanese paper,  
and Chinese herbals to become various decorative materials and art collections.  
It can be used as partitions, doors ,windows, and indoor installations.

# Ice crack

## 冰裂板





## Ice crack

冰裂板

规格size: 1220\*244mm  
1220\*3100mm

厚度thickness: 1.5-10mm



CU DESIGN COLLECTION.

陶联社

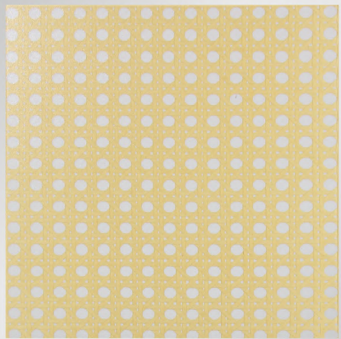






# Bamboo Weaving

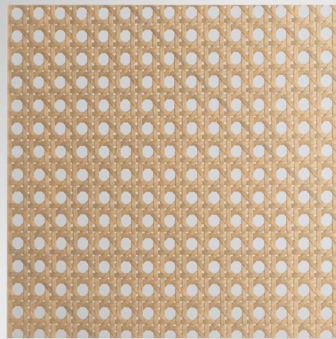
## 竹编



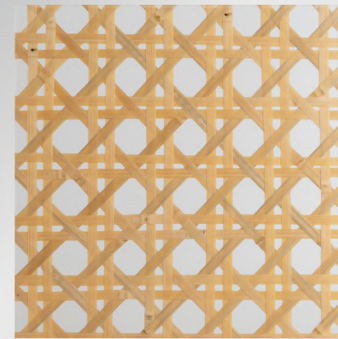
PA 239



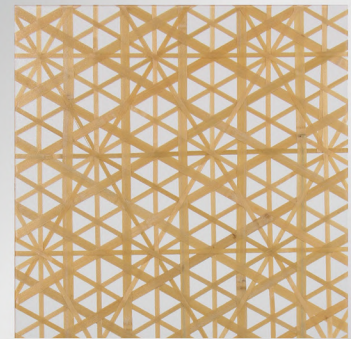
PA 264



PA 258



PA 265



PA 266





## Bamboo Weaving

竹编

规格size: 1220\*244mm  
1220\*3100mm

厚度thickness: 4mm











## Bamboo Leaves

竹影

规格size: 1220\*244mm  
1220\*3100mm

厚度thickness: 2mm

CU DESIGN COLLECTION ———  
陶 联 社











## Tree Shadows

树影

规格size: 1220\*244mm  
1220\*3100mm

厚度thickness: 2mm







## Herbs

中草药树脂艺术品

规格size: 415\*285\*45mm





